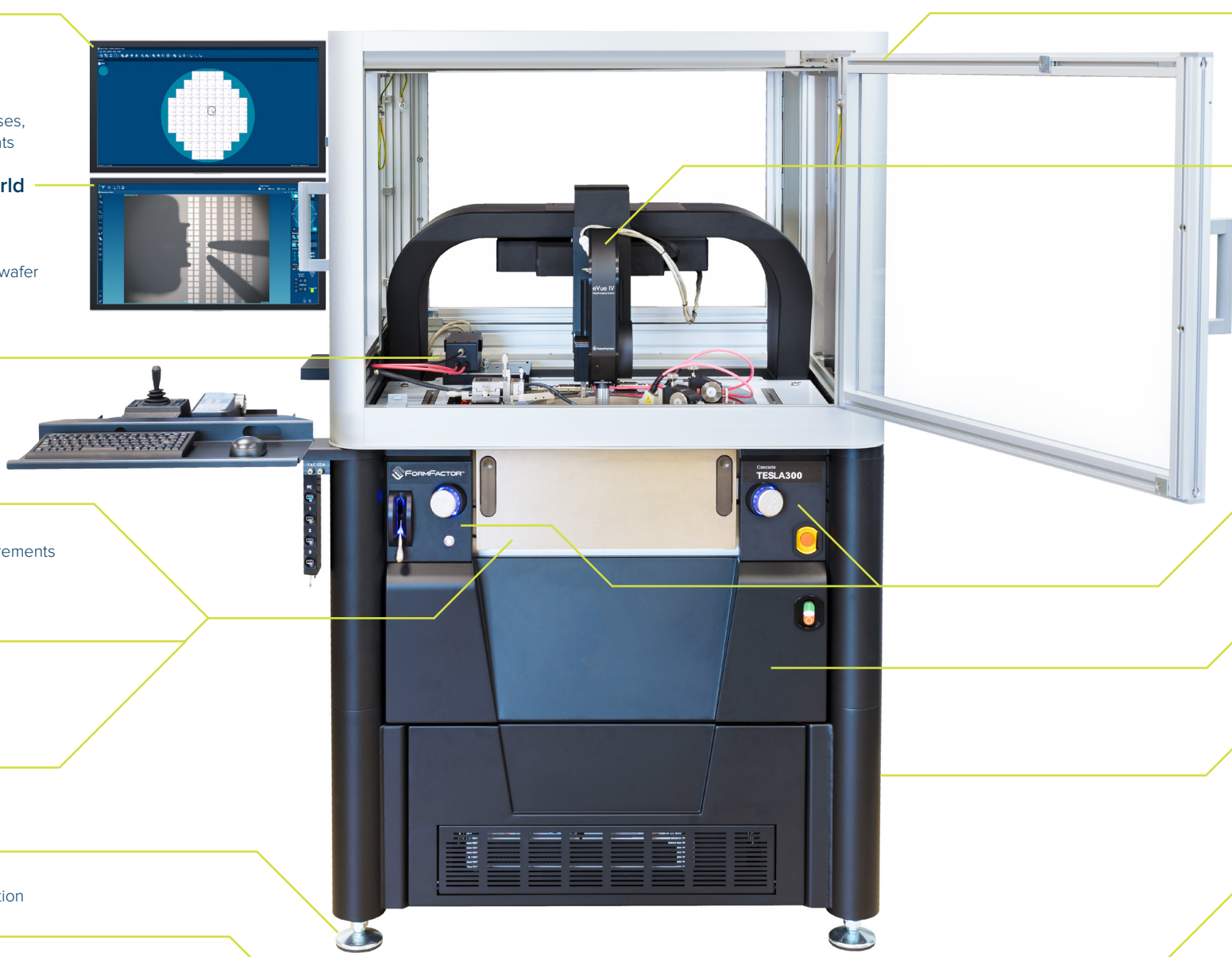


Cascade TESLA300

300 mm On-Wafer Power Semiconductor Probing System – Semi-automatic

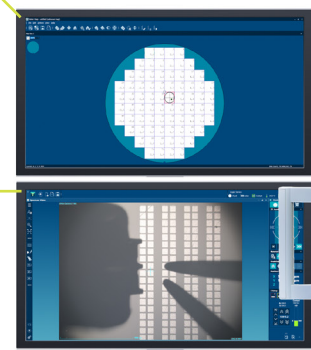


Up to 10 kV / 200 A with thin-wafer support
Accurate Rds(on) with constant Rc at all temperatures with Contact Intelligence™ Technology
Anti-arcing solutions for wafer, probes and probe cards



Velox™ probe station control software

- Innovative operating software for advanced prober operation, temperature control, z-profiling and stepping
- Wafer mapping, automated wafer alignment, and auto XYZ and theta correction for sub-micron stepping
- Workflow Guides: step-by-step guidance through different processes, no matter if these are simple procedures or complex measurements



Remote operation from home or anywhere in the world

- Safely and easily place probes down in contact with the test pads (full capability with motorized positioners)
- Safely move the wafer to different test sites
- View and manage live microscope viewing of the probes and the wafer
- View Wafer Map test plans
- Initiate remote test programs to gather and analyze test data

Connection panels

- Coaxial, triaxial, and pin jack feed-troughs available
- Limit cable strain and motion for measurement stability
- Instrument stays connected to back of panel
- Probe connection made at front of panel
- Simple to re-arrange cabling when needed



MicroChamber®

- EMI-shielding for low-noise measurements
- Environmentally sealed for moisture-free, low-temperature measurements
- Low volume for the fastest purge
- Light-tight to eliminate the need for a dark box

AttoGuard®

- Extends instrument guard to completely surround wafer
- Makes the station invisible to the instrument
- Extremely low capacitance and leakage characteristics
- Fast settling times

PureLine™ technology

- Enhanced EMI-shielding
- Ideal for low-level IV and CV measurements

Compact small footprint

- Integrated vibration isolation for reliable small pad probing
- Integrated system electronics with power loss wafer safety protection

TopHat™

- Dark, shielded and frost-free measurement environment
- Allows full access to positioners and microscope at any temperature
- Allows probe adjustments without exposing wafer and chamber to external environment

Probes

- High voltage (3 kV / 10 kV)
- High current (300 A)
- Low leakage



TUV-certified probing environment

- Safety-rated interlock system for high-power testing (meets EN 60947-5-1, EN 60204-1)
- Front, side and rear opening doors for ergonomic test setup and operation
- Side panel with cable pass-through for easy equipment configuration
- Full enclosure design (no light curtain) prevents accidentally tripping the safety interlock and stopping test

eVue™ IV Digital Imaging System

- Fast probe set-up with wide field-of-view and single objective in MicroChamber
- Easy navigation with multiple live video views of probes and wafer
- New high-speed focus system for faster and accurate die stepping
- New safety features for probes and usability

3D Manual Controls

- Virtual Platen Lift and XY knobs at front for intuitive, and precise movement of chuck in X, Y, and Z-direction
- Platen Lift enables extremely rapid and intuitive way in performing many alignment tasks, like setting up the contact height

Contact Intelligence™ Technology

- Integrated HTS (High Thermal Stability) reduces probe drift and thermal soak time
- Optional VueTrack™ reduces thermal soak time (faster time to data)
- Enables unattended test over multiple temperatures

Scalable system

- In-field upgradable wafer loading and automation
- Add test accuracy improvements for increased test performance

Rollout stage with quick access to auxiliary sites

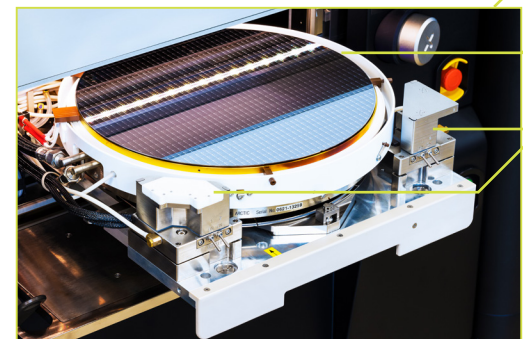
- Full wafer access via locking roll-out stage
- Two patented auxiliary chucks

Patented TESLA chuck technologies

- HV FemtoGuard® 3kV (triax) / 10kV (coax), and low leakage
- Gold-plated MicroVac™ surface for minimal chuck-to-wafer contact resistance
- Prevents thin wafers from curling and breaking
- Wide range of temperature options from -60°C to 300°C

Auxiliary chucks

- High voltage 10 kV compatible multi-purpose mounts for substrates (cleaning, contact)
- Automated probe cleaning capabilities



©Copyright 2021, FormFactor, Inc. All rights reserved. FormFactor and the FormFactor logo are trademarks of FormFactor, Inc. All other trademarks are the property of their respective owners. All information is subject to change without notice.